

HEM G2 vs Vera 3 Gateway Application Note

Step1, Include your HEM G2 to Vera 3, as shown in figure 1:

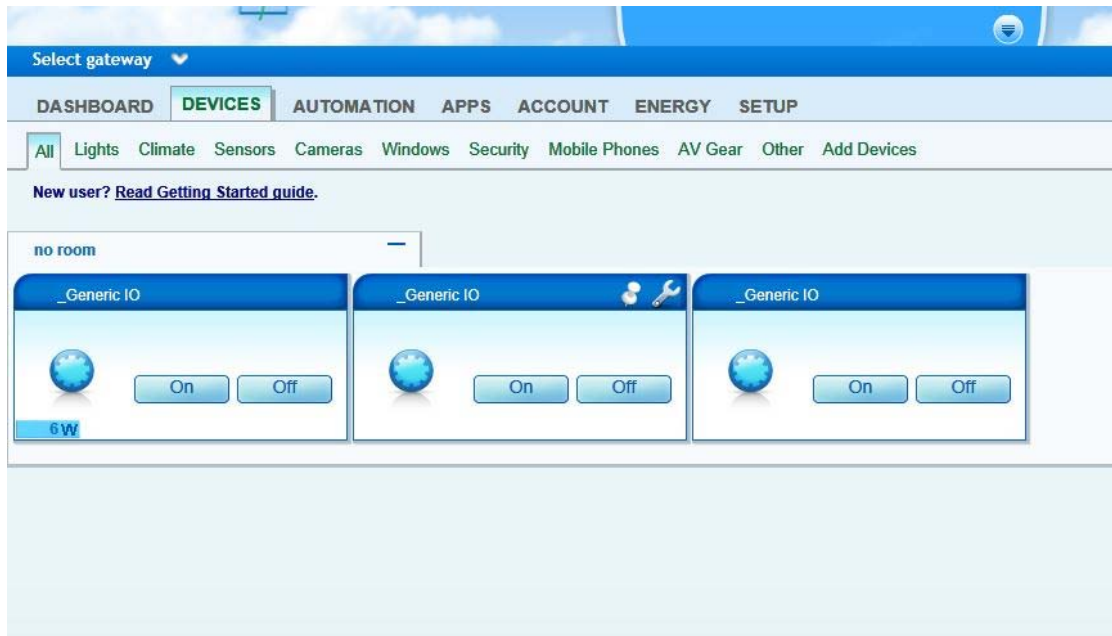


Figure 1

Step2, Click the “”, as shown in figure 2:

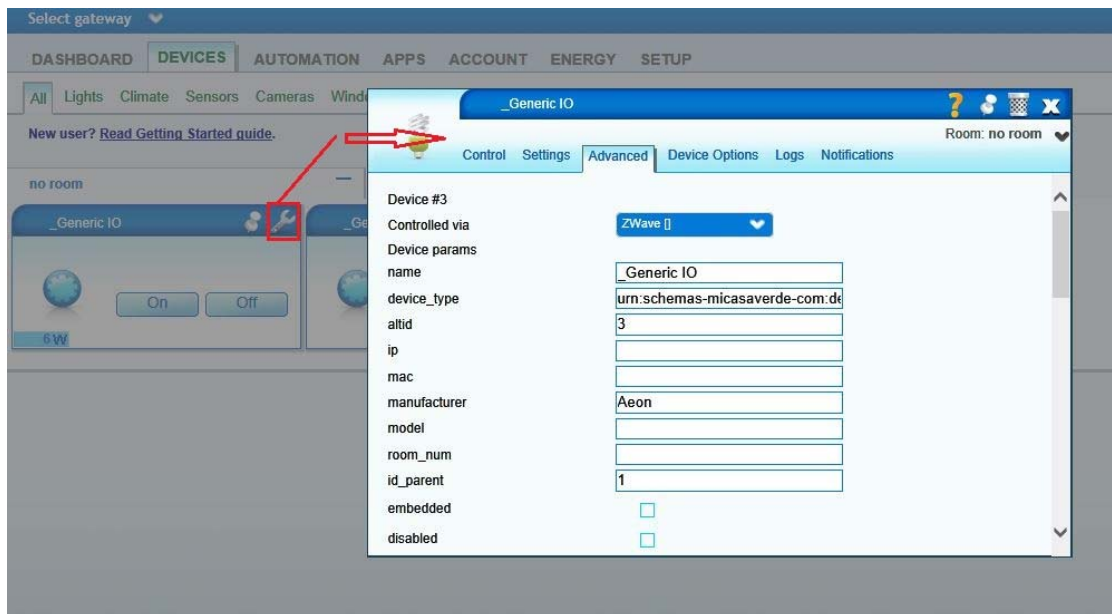


Figure 2

Step3, Rename the “_Generic IO of name” to “Home Energy Meter 2 Edition”, “_Generic IO of device_type” to “PowerMeter:1”, and “_Generic IO of device_file” to “D_PowerMeter1.xmlm”, as shown in figure 3:

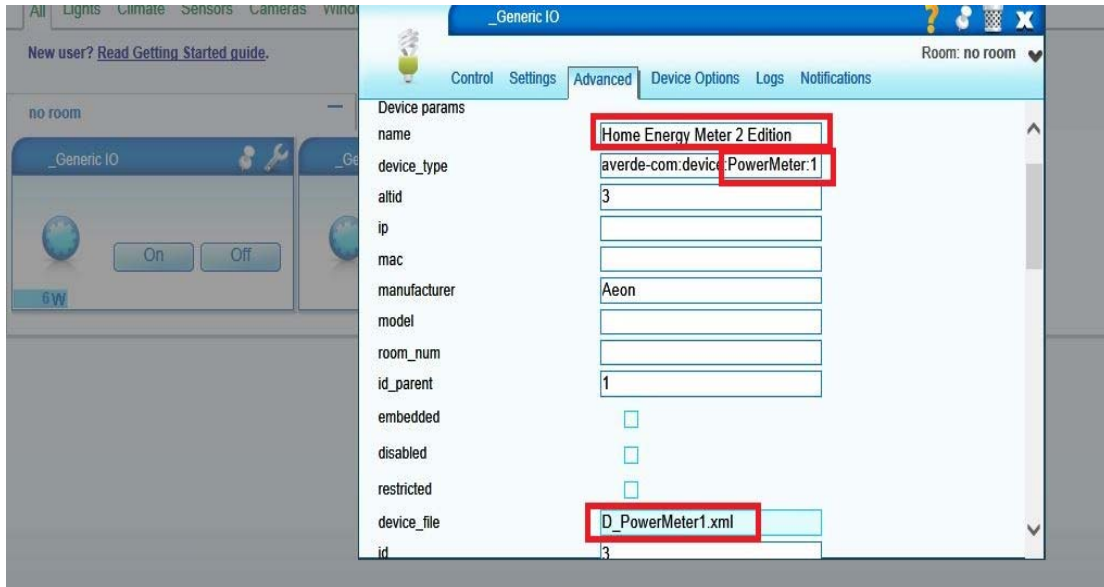


Figure 3

Step4, Select the menu of “Device Options”, and add configuration parameters, as shown in figure 4:

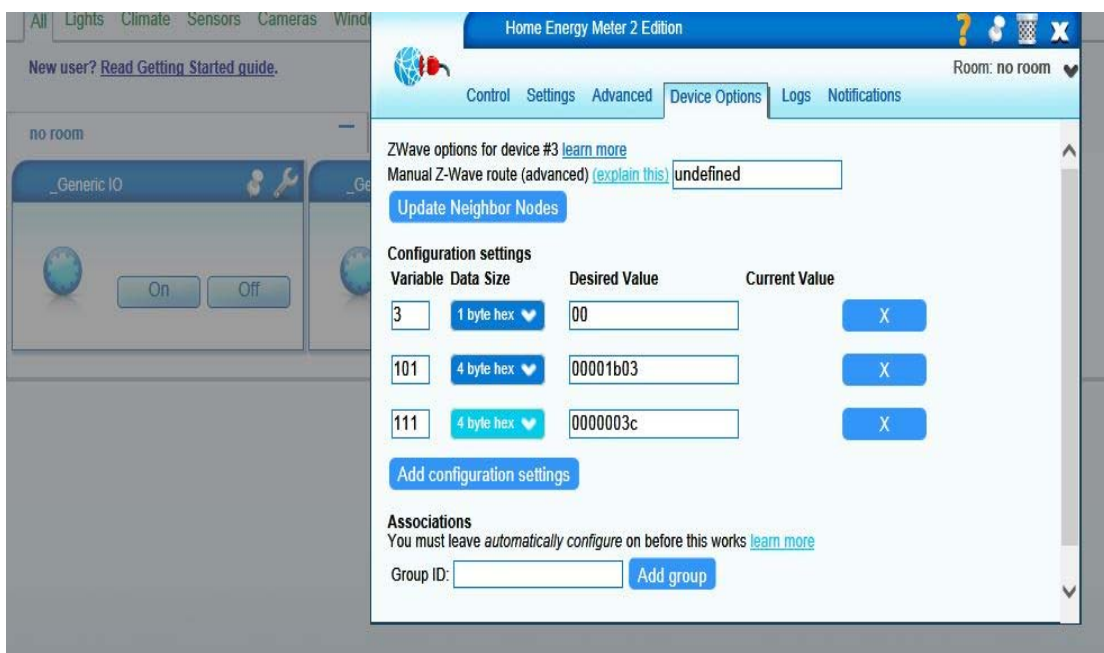


Figure 4

Step5, Rename the 2nd app “of _Generic IO” to “ Clamp 1”, “_Generic IO of device_type to “PowerMeter:1”, and “_Generic IO of device_file” to “D_PowerMeter1.xml”, as shown in figure 5:

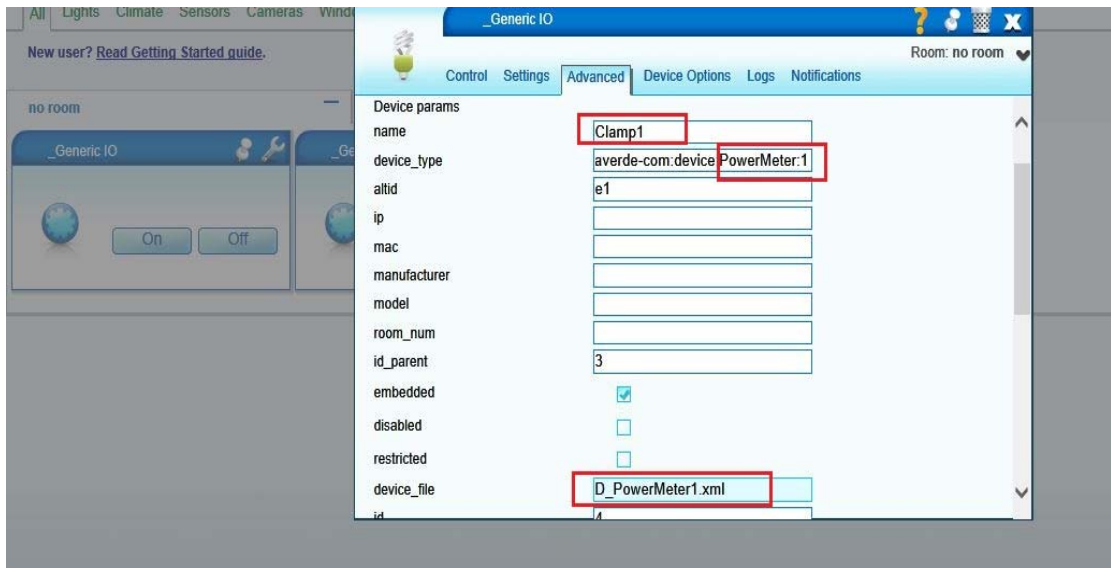


Figure 5

Step6, Rename the 3th app “of _Generic IO” to “ Clamp 2”, “_Generic IO of device_type to “PowerMeter:1”, and “_Generic IO of device_file” to “D_PowerMeter1.xmlm”, as shown in figure 6:

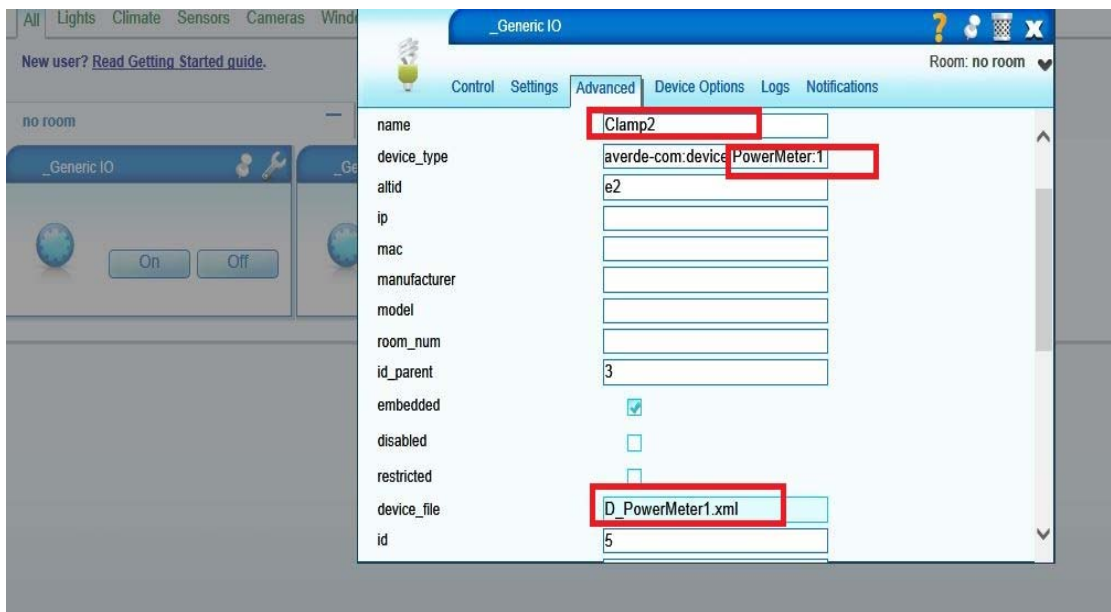


Figure 6

Step6, Click the “[Login](#) [Register](#) [SAVE](#)” button, and then the software interface will show below:

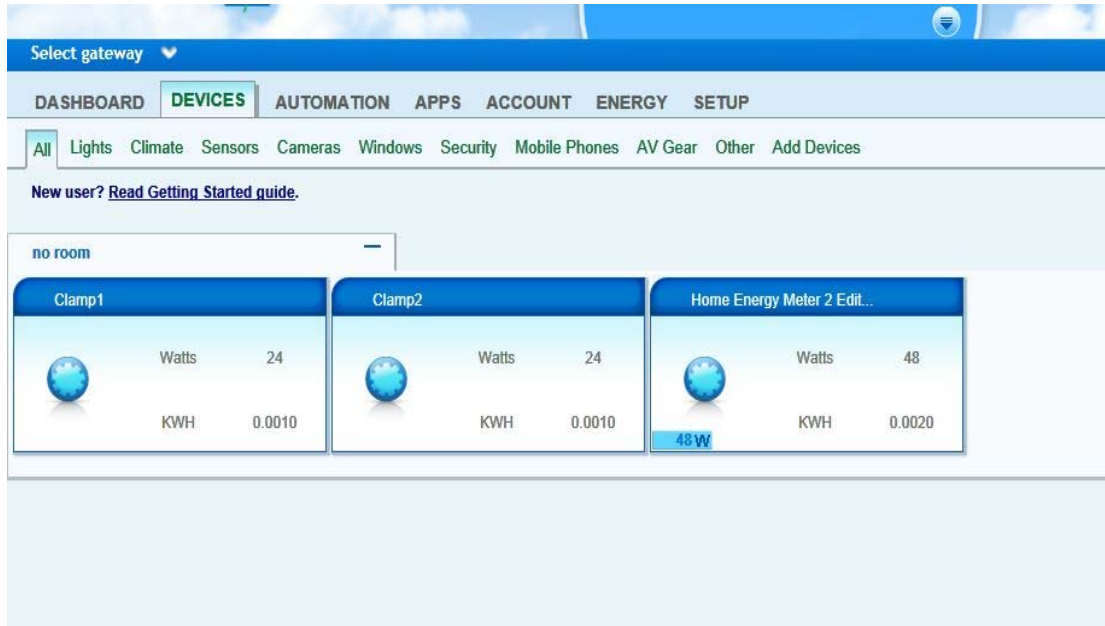


Figure 7